



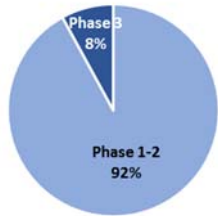
# Outcomes Dashboard for Central American Young Men

Fiscal Year 2019

## Participants Served

**79**  
Number of Young Men Enrolled

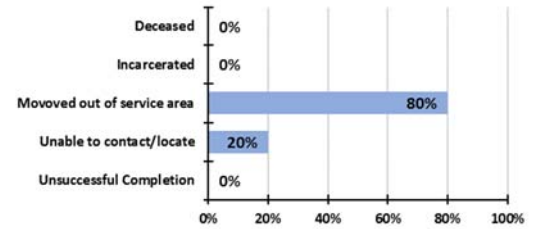
### Transformational Relationship Phases



### Retention and Attrition

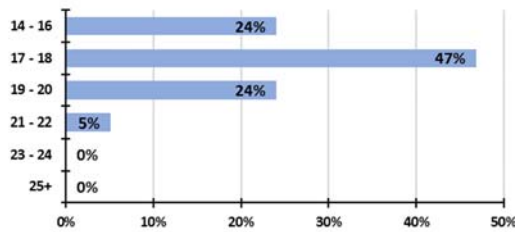


### Attrition Reasons

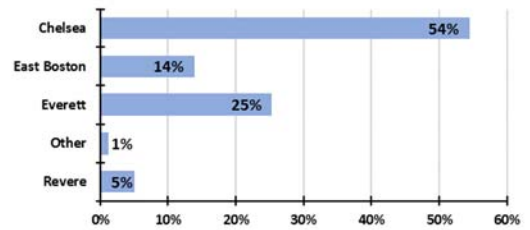


## Demographics and Risk Factors

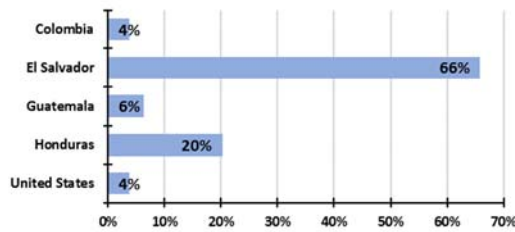
### Age Range



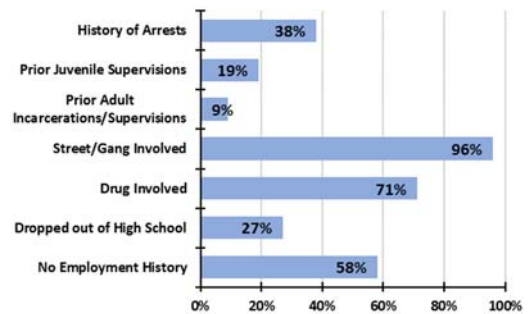
### City of Residency



### Country Born

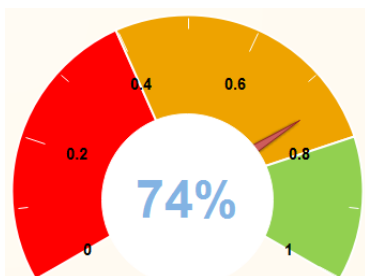


### Risk Factors



## Relentless Outreach (Creating Safety)

### Contact Standards



**5,446**

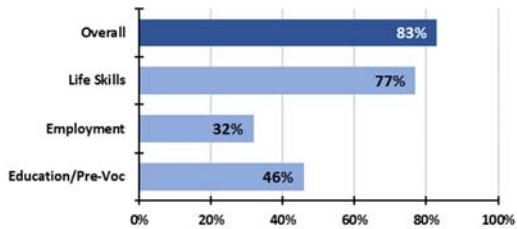
Number of Efforts Made by Youth Workers

**38.1**

Average Minutes Spent Per Effort

## Stage Based Programming (Teaching and Offering Opportunities to Practice Skills)

### Programming Engagement



# 5

**Number of Participants Engaged in Transitional Employment**

# 68%

**Percent of Participants Engaged in CBT Practices**

## Short-Term Outcomes

### Increase Emotional Regulation



(n=17 enrolled 18+ months with baseline and follow-up assessment)

### Workforce Readiness Gains



(n=14 enrolled 18+ months engaged in employment programming)

### Educational Gains



(n=14 enrolled 18+ months engaged in alternative educational programming)

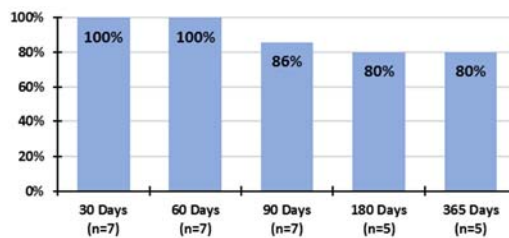
## Intermediate Outcomes

# 64%

**Percent of Participants Enrolled 21+ Months Placed in Unsubsidized Employment**

(n=11 enrolled 21+ months with work permits)

### Employment Retention



# 100%

**Percent of Participants Enrolled 24+ Months with No New Incarcerations**

(n=8 enrolled 24+ months)