

IMPACT

IN FY 2023 WE SERVED **393** OF THE HIGHEST-RISK YOUNG WOMEN IN NEW ENGLAND WITH AN **89%** RETENTION RATE.

ENGAGEMENT

Enrolled less than 24 months

29,891
RELENTLESS OUTREACH EFFORTS

90%
PARTICIPANTS SERVED IN AN AVERAGE MONTH

84%
ENGAGED IN REWIRE CBT
289 of 346

COGNITIVE-BEHAVIORAL OUTCOMES

Enrolled 18 months or longer

97%
138 of 143
IMPROVED BEHAVIORAL HEALTH

79%
96 of 121
IMPROVED EMOTIONAL REGULATION

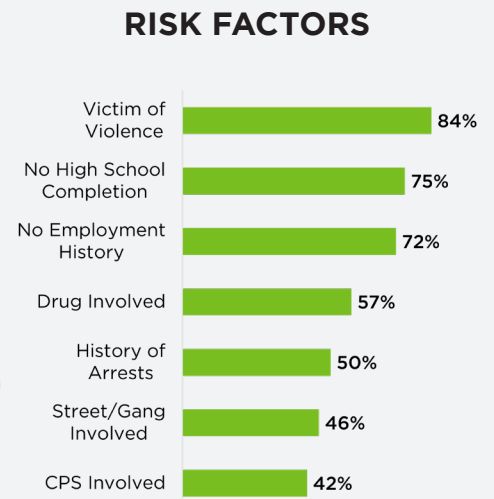
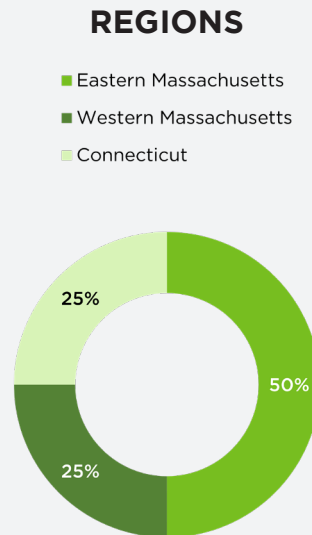
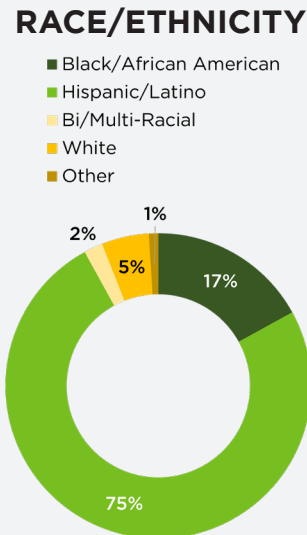
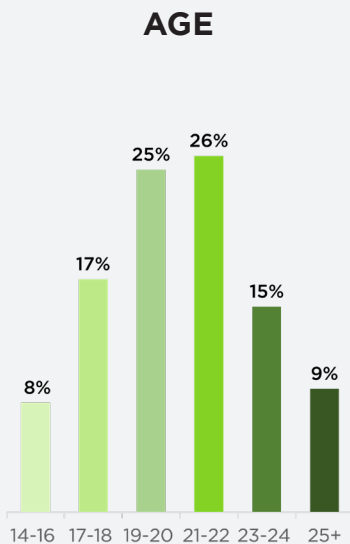
CRIMINAL JUSTICE INVOLVEMENT

Enrolled 24 months or longer

97%
109 of 112
HAD NO NEW ARRESTS

100%
112 of 112
HAD NO NEW INCARCERATIONS

POPULATION SERVED



WHAT WE'RE SEEING

Young women, most of whom are mothers, at **acute, elevated risk** of gun violence.

- Women increasingly the actors in violence as well as victims.
- Surge in sex trafficking and intimate partner violence involving guns.
- Violence sparked on social media.

Front-line **staff are now at higher risk** of experiencing gun violence.

There is a dramatic need for sharpened focus and collaboration around safety in community violence intervention (CVI) work.

HOW WE'RE RESPONDING

Roca uses **Rewire CBT** to help young people break free from the impacts of trauma, slow down, breathe, and take an 8-12 second pause before a conflict ends in injury or death.

Roca is also implementing sweeping operational updates to **safety protocols**.

- Added new roles at various sites: Outreach & Safety Manager; Front Desk Security Attendants.
- Expanding/re-emphasizing safety checklists.
- Implementing safety checks before knocking on our participants' doors.

We are tightening **collaboration with our partners**.

- Increasing work with law enforcement.
- Making systems more gender responsive.
- Identifying barriers caused by multi-systems involvement (e.g. child welfare and criminal justice).

We are a **focused deterrence model**.

- Working with those at highest risk of violence.
- Collaborating with criminal justice partners.
- Offering full wrap-around services and a CBT-based approach.

STEMMING THE TIDE OF VIOLENCE



WE IDENTIFY AND FOCUS ON THE YOUNG PEOPLE MOST LIKELY TO SHOOT OR BE SHOT.



WE UTILIZE RELENTLESS OUTREACH TO ENGAGE THEM AND BUILD TRUST. WE NEVER GIVE UP.



OUR EVIDENCE-BASED MODEL IS ROOTED IN BRAIN SCIENCE TO HEAL TRAUMA AND PROVIDE THE SKILLS TO CHANGE BEHAVIOR.

